

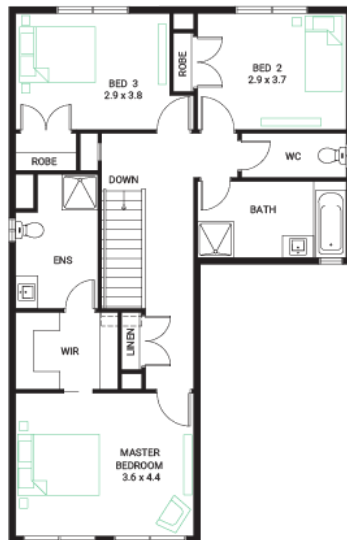
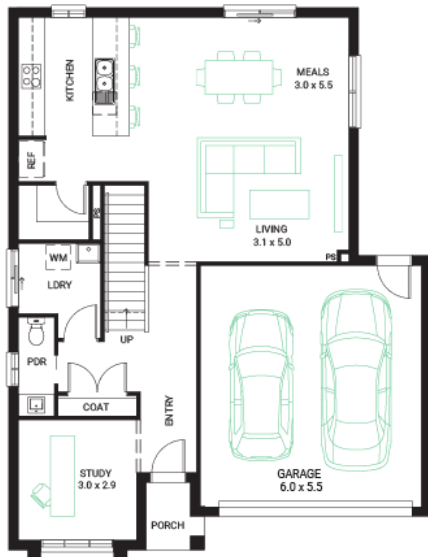


## Surge 23

3  2  2 

**Address**  
Lot 330, Harli, Cranbourne West,

<b>Facade</b> Classic (Build Over)	<b>Lot Width</b> 10.8	<b>Lot size</b> 299 m <sup>2</sup>	<b>House size</b> 214 m <sup>2</sup>
---	--------------------------	---------------------------------------	---



### Your Inclusions

- LIMITED TIME 30K REBATE AVAILABLE\*
- 'H' class waffle concrete slab
- Double glazing throughout
- Colorbond® corrugate roof with 22.5-degree roof pitch
- Dimmable LED downlights to main Living areas
- Flooring throughout (tiles and carpet)
- 'Quantum Quartz' engineered stone benchtops with 20mm edge profile, to Kitchen
- 900mm Kitchen Appliances
- Laminate overhead cupboards with concealed rangehood to Kitchen
- Tiled shower bases to Bathroom and Ensuite
- 'Colorbond' sectional overhead door with automated lifter and remote controls
- Solar PV system
- 25-year structural guarantee
- 12-month maintenance period
- 7-Star energy rating compliance
- Trusted New Home Builder in Melbourne, Victoria for over 25 years

Package Enquiries  
Dale Bridgland - 0448421941,  
dale.bridgland@beachwoodhomes.com.au

# Harli

C.WEST 3977