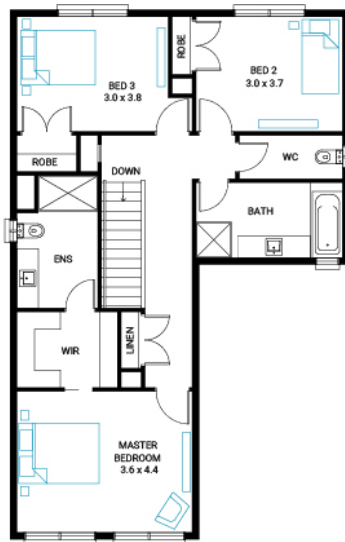
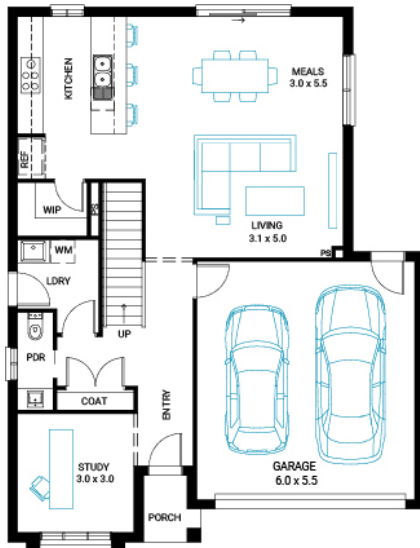




## Gunnamatta 23

3 2 2

Address	Facade	Lot Width	Lot size	House size
Lot 327, Harli, Cranbourne West,	Bay Mk1	10.8	299 m <sup>2</sup>	214 m <sup>2</sup>



### Your Inclusions

- Floor to Ceiling EXTRAS Vaulted at over 25k\*
- Fixed Site Costs
- Double glazing throughout
- 'Colorbond' corrugate roof with 22.5-degree roof pitch
- Dimmable LED downlights to main Living areas
- Flooring throughout (tiles and carpet)
- 'Quantum Quartz' engineered stone benchtops with 20mm edge profile, to Kitchen
- 900mm Kitchen Appliances
- Laminate overhead cupboards with concealed rangehood to Kitchen
- Tiled shower bases to Bathroom and Ensuite
- 'Colorbond' sectional overhead door with automated lifter and remote controls
- Solar PV system
- 25-year structural guarantee
- 12-month maintenance period
- 7-Star energy rating compliance
- Trusted New Home Builder in Melbourne, Victoria for over 25 years

Package Enquiries  
Dale Bridgland - 0448421941,  
dale.bridgland@beachwoodhomes.com.au

# Harli

C.WEST 3977