



Norfolk 25

4 2 2

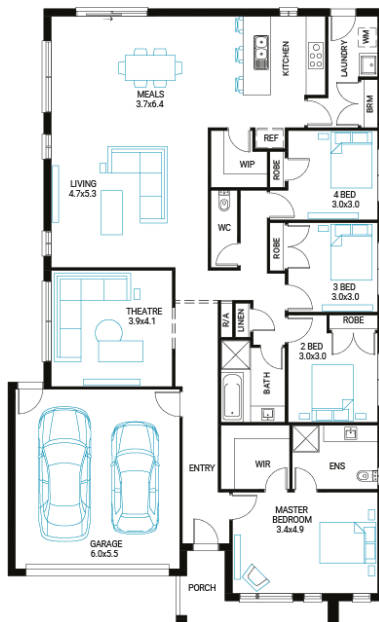
Address
Lot 526, The Fairways, Drouin, 3818

Facade
Pacific

Lot Width
19

Lot size
532 m²

House size
235 m²



Available Structural Options

Butlers Pantry, Deluxe Ensuite, Powder Room, Deluxe Kitchen, Outdoor Living, Grand Outdoor Living, Study,

Your Inclusions

- 'H' class waffle concrete slab
- Double glazing throughout
- Insect Screens with fibreglass mesh throughout
- Dimmable LED downlights to main Living areas
- Flooring throughout (tiles and carpet)
- 'Quantum Quartz' engineered stone benchtops with 20mm edge profile, to Kitchen
- 900mm Kitchen Appliances
- Laminate overhead cupboards with concealed rangehood to Kitchen
- Tiled shower bases to Bathroom and Ensuite
- Gas ducted heating
- 'Colorbond' sectional overhead door with automated lifter and remote controls
- Solar PV system
- 25-year structural guarantee
- 12-month maintenance period
- 7-Star energy rating compliance
- Trusted New Home Builder in Melbourne, Victoria for over 25 years

Package Enquiries
Leanne Marshall - 0409 449 841,
leanne@beachwood-homes.com.au

THE FAIRWAYS