

EXCLUSIVE



## Lorne 28

4 2 2

**Address**  
Lot 3175, Eliston, Clyde, 3978

**Facade**  
Cape

**Lot Width**  
14

**Lot size**  
400 m<sup>2</sup>

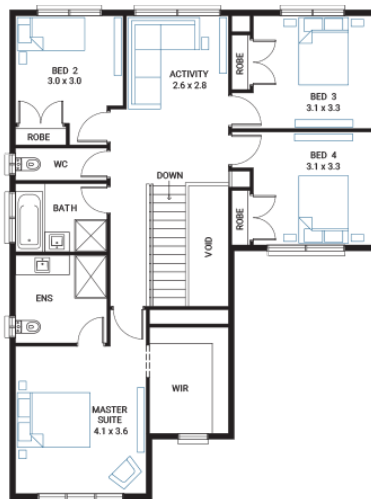
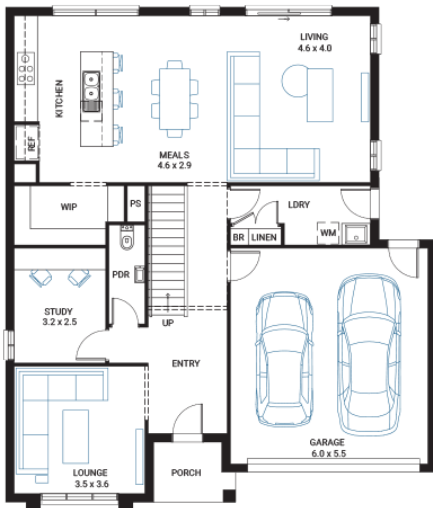
**House size**  
259 m<sup>2</sup>

### Available Structural Options

First Floor Grand Ensuite, Ground Floor Master Suite, First Floor Side Activity, Deluxe Kitchen, Butler's Pantry, Balcony, Rear Flip, WIR to Bed 2 and 3,

### Your Inclusions

- 'H' class waffle concrete slab
- Double glazing throughout
- Colorbond® corrugate roof with 22.5-degree roof pitch
- Dimmable LED downlights to main Living areas
- Flooring throughout (tiles and carpet)
- 'Quantum Quartz' engineered stone benchtops with 20mm edge profile, to Kitchen
- 900mm Kitchen Appliances
- Laminate overhead cupboards with concealed rangehood to Kitchen
- Tiled shower bases to Bathroom and Ensuite
- Gas ducted heating
- 'Colorbond' sectional overhead door with automated lifter and remote controls
- Solar PV system
- 25-year structural guarantee
- 12-month maintenance period
- 7-Star energy rating compliance
- Trusted New Home Builder in Melbourne, Victoria for over 25 years



Package Enquiries  
Abbey Cole - 0448 421 941,  
abbey@beachwood-homes.com.au

