



Jarrah 29



Address
Lot 1612, Canopy, Cranbourne, 3977

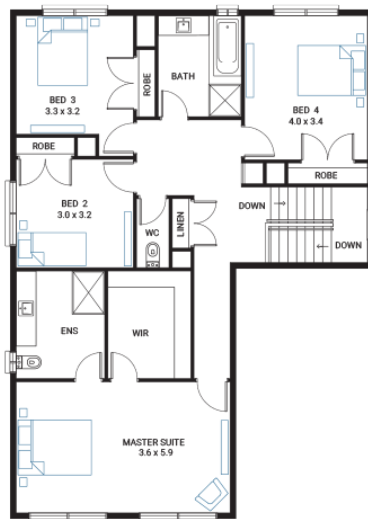
Facade Classic
Lot Width 14
Lot size 367 m²
House size 269 m²

Available Structural Options

Grand Ensuite, Deluxe Kitchen, Powder Room, Extended Laundry & WIP, Butler's Pantry, Stair Seat, Deluxe Bathroom, Additional WIR, Balcony 1,

Your Inclusions

- 'H' class waffle concrete slab
- Double glazing throughout
- Colorbond® corrugate roof with 22.5-degree roof pitch
- Dimmable LED downlights to main Living areas
- Flooring throughout (tiles and carpet)
- 'Quantum Quartz' engineered stone benchtops with 20mm edge profile, to Kitchen
- 900mm Kitchen Appliances
- Laminate overhead cupboards with concealed rangehood to Kitchen
- Tiled shower bases to Bathroom and Ensuite
- Gas ducted heating
- 'Colorbond' sectional overhead door with automated lifter and remote controls
- Solar PV system
- 25-year structural guarantee
- 12-month maintenance period
- 7-Star energy rating compliance
- Trusted New Home Builder in Melbourne, Victoria for over 25 years



Package Enquiries
Abbey Cole - 0448 421 941,
abbey@beachwood-homes.com.au

