

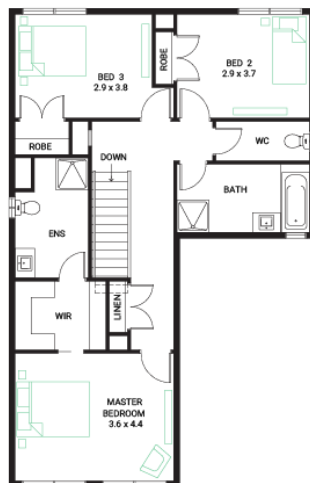
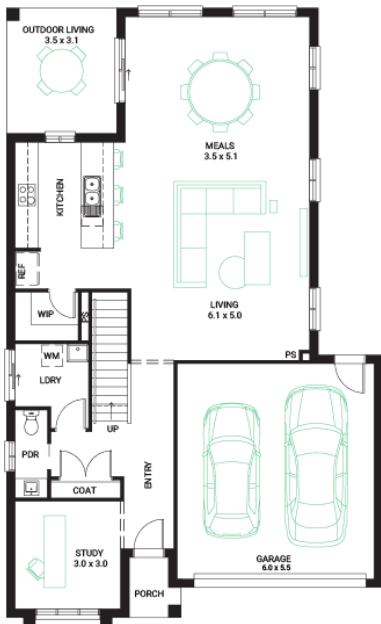


## Surge 26

3  2  2 

**Address**  
Lot 60, Providence, Officer, 3809

Facade	Lot Width	Lot size	House size
Classic (Build Over)	12.5	363 m <sup>2</sup>	244 m <sup>2</sup>



### Available Structural Options

Deluxe Kitchen, Extended Laundry Kitchen, Bed 4, Shower to Powder, Rear Flip, Grand Outdoor,

### Your Inclusions

- 'H' class waffle concrete slab
- Double glazing throughout
- Insect Screens with fibreglass mesh throughout
- Flooring throughout (tiles and carpet)
- Ceramic wall tiles to Kitchen splashback, floor and skirting tiles to Bathroom, Ensuite and W.C.s
- Laminate overhead cupboards with concealed rangehood to Kitchen
- Gas ducted heating
- 'Dulux' Wash and Wear 3 Coat paint system
- Solar PV system
- 25-year structural guarantee
- 12-month maintenance period
- 7-Star energy rating compliance
- Trusted New Home Builder in Melbourne, Victoria for over 25 years

Package Enquiries  
Raghu Rao - 0423 529 243,  
Raghu@beachwood-homes.com.au

