



## Glenelg 32



## Address

Lot 142, Drouin Fields, Drouin, 3818

**Facade**  
Central

**Lot Width**  
19.6

**Lot size**  
665 m<sup>2</sup>

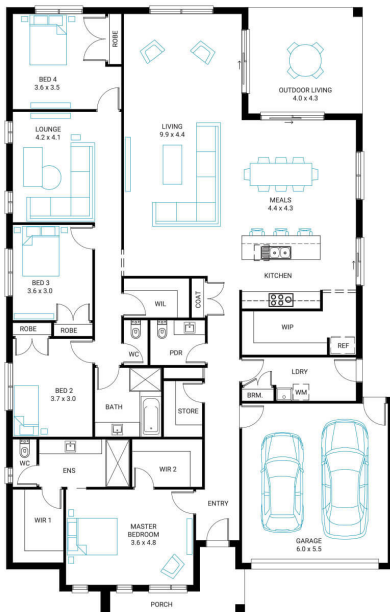
**House size**  
302 m<sup>2</sup>

## Available Structural Options

Fifth Bedroom, Additional Powder Room, U Shape Kitchen,  
Butlers Pantry, Grand Ensuite, Office, Rear Flip,

## Your Inclusions

- 'H' class concrete slab
- Double glazing throughout
- Insect Screens with fibreglass mesh throughout
- Dimmable LED downlights to main Living areas
- Flooring throughout (tiles and carpet)
- 'Quantum Quartz' engineered stone benchtops with 20mm edge profile, to Kitchen
- 900mm Kitchen Appliances
- Laminate overhead cupboards with concealed rangehood to Kitchen
- Tiled shower bases to Bathroom and Ensuite
- Gas ducted heating
- 'Colorbond' sectional overhead door with automated lifter and remote controls
- Solar PV system
- 25-year structural guarantee
- 12-month maintenance period
- 7-Star energy rating compliance
- Trusted New Home Builder in Melbourne, Victoria for over 25 years



Package Enquiries  
Leanne Marshall - 0409 449 841,  
[leanne@beachwood-homes.com.au](mailto:leanne@beachwood-homes.com.au)



DROUIN FIELDS