



## Spinifex 28



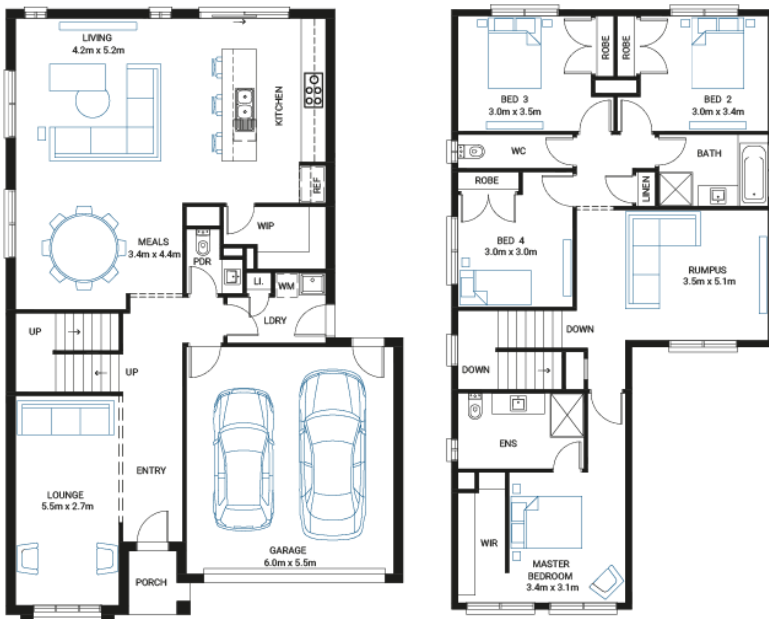
**Address**  
Lot 17, Waterford Rise, Warragul, 3820

**Facade**  
Cape Mk1  
(No build over garage)

**Lot Width**  
14

**Lot size**  
427 m<sup>2</sup>

**House size**  
258 m<sup>2</sup>



### Available Structural Options

Extended Lounge, Extended Laundry & Pantry, Fifth Bedroom, Fireplace, Butlers Pantry, Balcony, Shower to Powder Room, Deluxe Kitchen, Additional Master Suite, First Floor Powder Room,

### Your Inclusions

- 'H' class waffle concrete slab
- Double glazing throughout
- Colorbond® corrugate roof with 22.5-degree roof pitch
- Dimmable LED downlights to main Living areas
- Flooring throughout (tiles and carpet)
- 'Quantum Quartz' engineered stone benchtops with 20mm edge profile, to Kitchen
- 900mm Kitchen Appliances
- Laminate overhead cupboards with concealed rangehood to Kitchen
- Tiled shower bases to Bathroom and Ensuite
- Gas ducted heating
- 'Colorbond' sectional overhead door with automated lifter and remote controls
- Solar PV system
- 25-year structural guarantee
- 12-month maintenance period
- 7-Star energy rating compliance
- Trusted New Home Builder in Melbourne, Victoria for over 25 years

Package Enquiries  
Leanne Marshall - 0409 449 841,  
leanne@beachwood-homes.com.au



The package price is subject to site costs adjustment & does not include any stamp duty, government levies, legal or bank charges. Beachwood Homes Pty. Ltd. reserves the right to amend pricing & inclusions without notice. Alterations may incur additional charges. Note the images used on this brochure are indicative only, please check with our sales team for accurate working drawing details. - Published July 07, 2024