

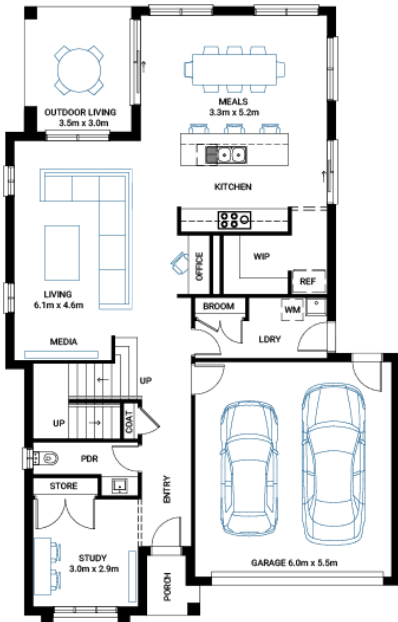


Elwood 28



Address
Lot 185, Verve, Clyde North, 3978

Facade Century Mk1	Lot Width 12.5	Lot size 355 m ²	House size 254 m ²
---------------------------------	--------------------------	---------------------------------------	---



Available Structural Options

Laundry Chute, Rear Flip, Shower To Powder, Additional Master Suite, Butlers Pantry, Fourth Bedroom, Balcony Option, Alternative Kitchen,

Your Inclusions

- 'H' class waffle concrete slab
- Double glazing throughout
- Colorbond® corrugate roof with 22.5-degree roof pitch
- Dimmable LED downlights to main Living areas
- Flooring throughout (tiles and carpet)
- 'Quantum Quartz' engineered stone benchtops with 20mm edge profile, to Kitchen
- 900mm Kitchen Appliances
- Laminate overhead cupboards with concealed rangehood to Kitchen
- Tiled shower bases to Bathroom and Ensuite
- Gas ducted heating
- 'Colorbond' sectional overhead door with automated lifter and remote controls
- Solar PV system
- 25-year structural guarantee
- 12-month maintenance period
- 7-Star energy rating compliance
- Trusted New Home Builder in Melbourne, Victoria for over 25 years

Package Enquiries
Raghu Rao - 0423 529 243,
Raghu@beachwood-homes.com.au

