

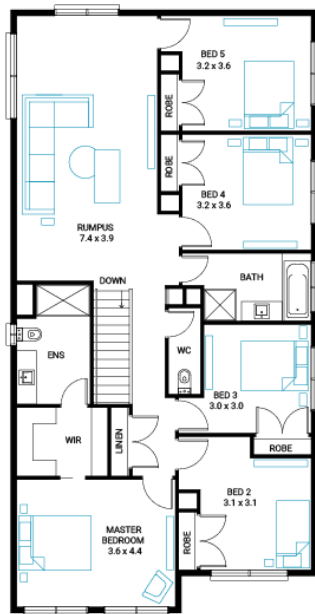
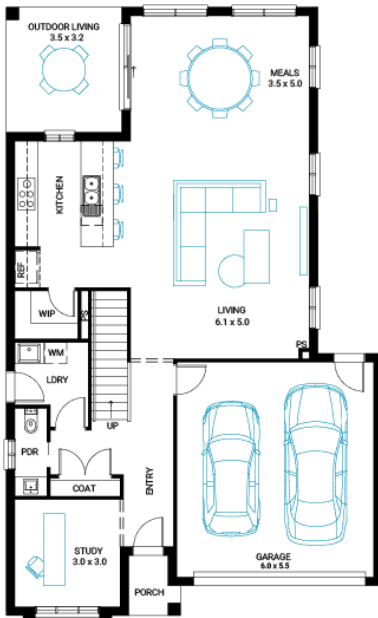


Gunnamatta 32 ●

5 2 2

Address
Lot 4656, Meridian, Clyde North, 3978

Facade Bay Mk3 **Lot Width** 13.7 **Lot size** 507 m² **House size** 296 m²



Available Structural Options

Deluxe Kitchen, Extended Laundry & Kitchen, Shower To Powder, Balcony 1, Balcony 2, Rear Flip, Grand Outdoor,

Your Inclusions

- 'H' class waffle concrete slab
- Double glazing throughout
- Colorbond' corrugate roof with 22.5-degree roof pitch
- Dimmable LED downlights to main Living areas
- Flooring throughout (tiles and carpet)
- 'Quantum Quartz' engineered stone benchtops with 20mm edge profile, to Kitchen
- 900mm Kitchen Appliances
- Laminate overhead cupboards with concealed rangehood to Kitchen
- Tiled shower bases to Bathroom and Ensuite
- Gas ducted heating
- 'Colorbond' sectional overhead door with automated lifter and remote controls
- Solar PV system
- 25-year structural guarantee
- 12-month maintenance period
- 7-Star energy rating compliance
- Trusted New Home Builder in Melbourne, Victoria for over 25 years

Package Enquiries
Raghu Rao - 0423 529 243,
Raghu@beachwood-homes.com.au

MERIDIAN
CLYDE NORTH