

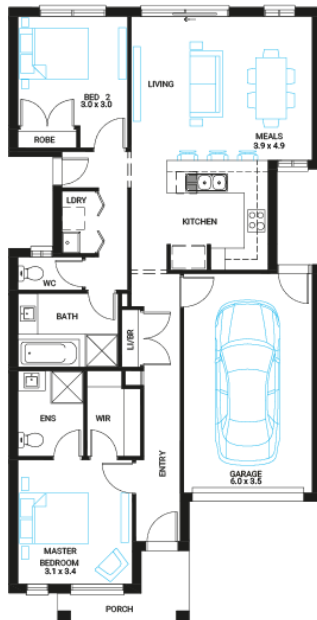


## Tea Tree 13

2 2 1

**Address**  
Lot 120, CrestWood Place, Cranbourne East, 3977

<b>Facade</b> Broad MK1	<b>Lot Width</b> 9	<b>Lot size</b> 221 m <sup>2</sup>	<b>House size</b> 124 m <sup>2</sup>
-------------------------------	-----------------------	---------------------------------------	---



### Available Structural Options

Deluxe Ensuite, 3 Bedroom Option,

### Your Inclusions

- 'H' class waffle concrete slab
- Double glazing throughout
- Insect Screens with fibreglass mesh throughout
- Flooring throughout (tiles and carpet)
- Ceramic wall tiles to Kitchen splashback, floor and skirting tiles to Bathroom, Ensuite and W.C.s
- Laminate overhead cupboards with concealed rangehood to Kitchen
- Tiled shower bases to Bathroom and Ensuite
- Gas ducted heating
- 'Dulux' Wash and Wear 3 Coat paint system
- Solar PV system
- 25-year structural guarantee
- 12-month maintenance period
- 7-Star energy rating compliance
- Trusted New Home Builder in Melbourne, Victoria for over 25 years

Package Enquiries  
Raghu Rao - 0423 529 243,  
Raghu@beachwood-homes.com.au

